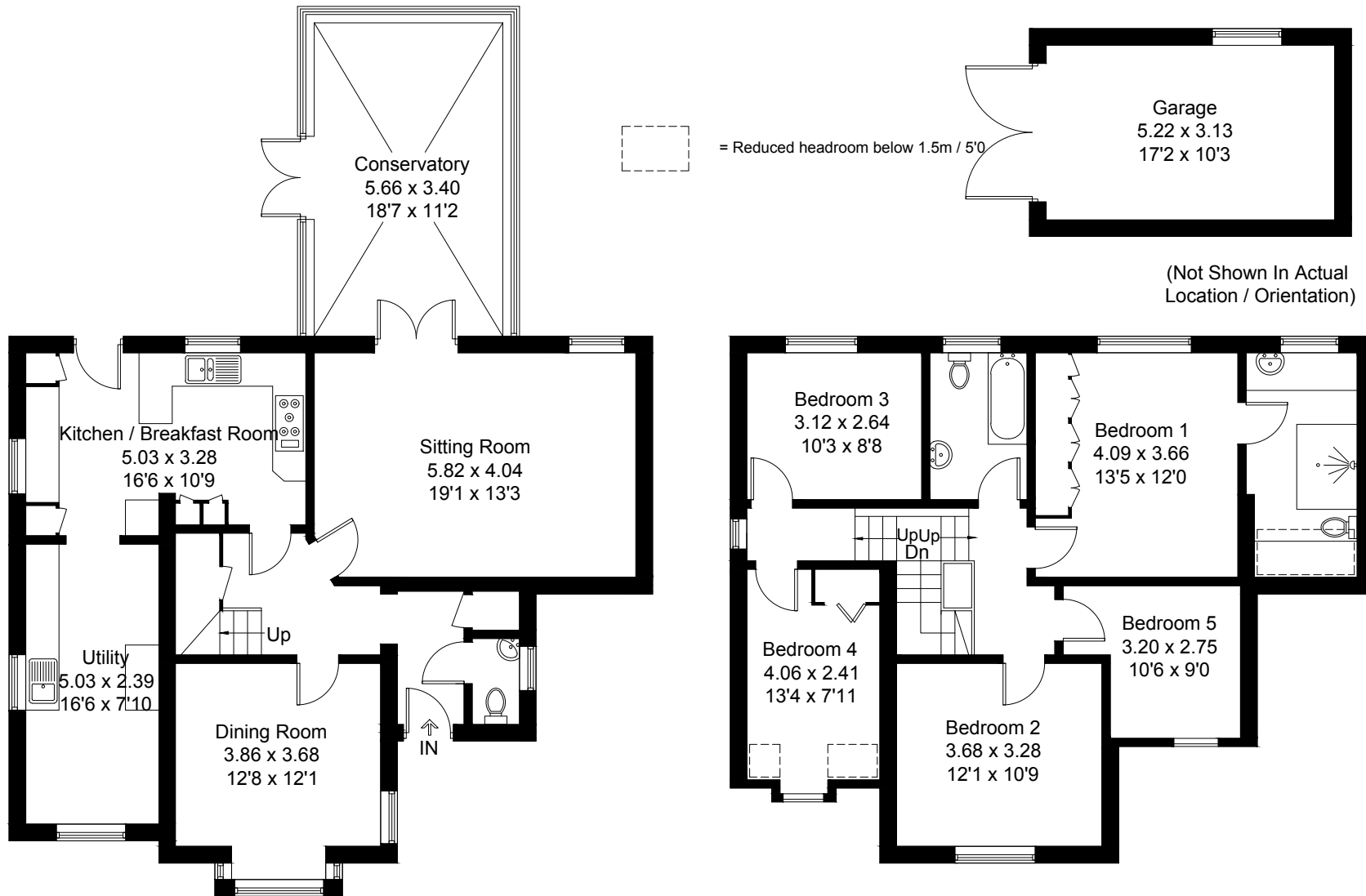


Approximate Gross Internal Area = 183 sq m / 1970 sq ft
Garage = 16.7 sq m / 180 sq ft
Total = 199.7 sq m / 2150 sq ft



Ground Floor

First Floor

Created by **BAY TREES ESTATES - Telephone 01243 850451.**

These plans are for representation purposes only as defined by RICS - Code of Measuring Practice. Not to scale.(ID326785)