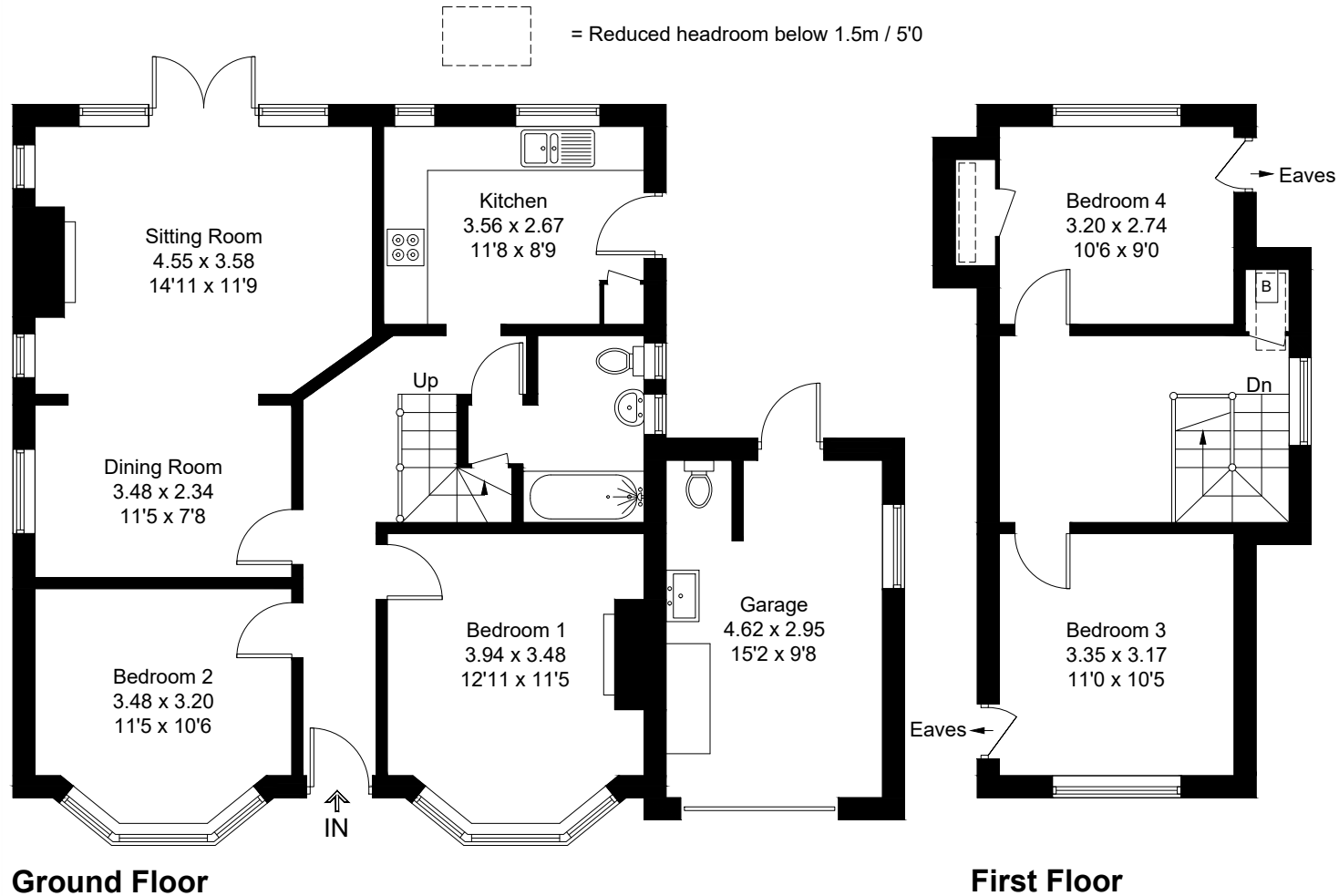
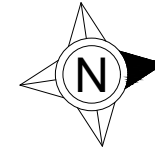


Approximate Gross Internal Area = 108.5 sq m / 1168 sq ft
Garage = 13.7 sq m / 147 sq ft
Total = 122.2 sq m / 1315 sq ft



Created by **BAY TREE ESTATES** - Telephone **01243 850451**.

These plans are for representation purposes only as defined by RICS - Code of Measuring Practice. Not to scale.(ID1217271)