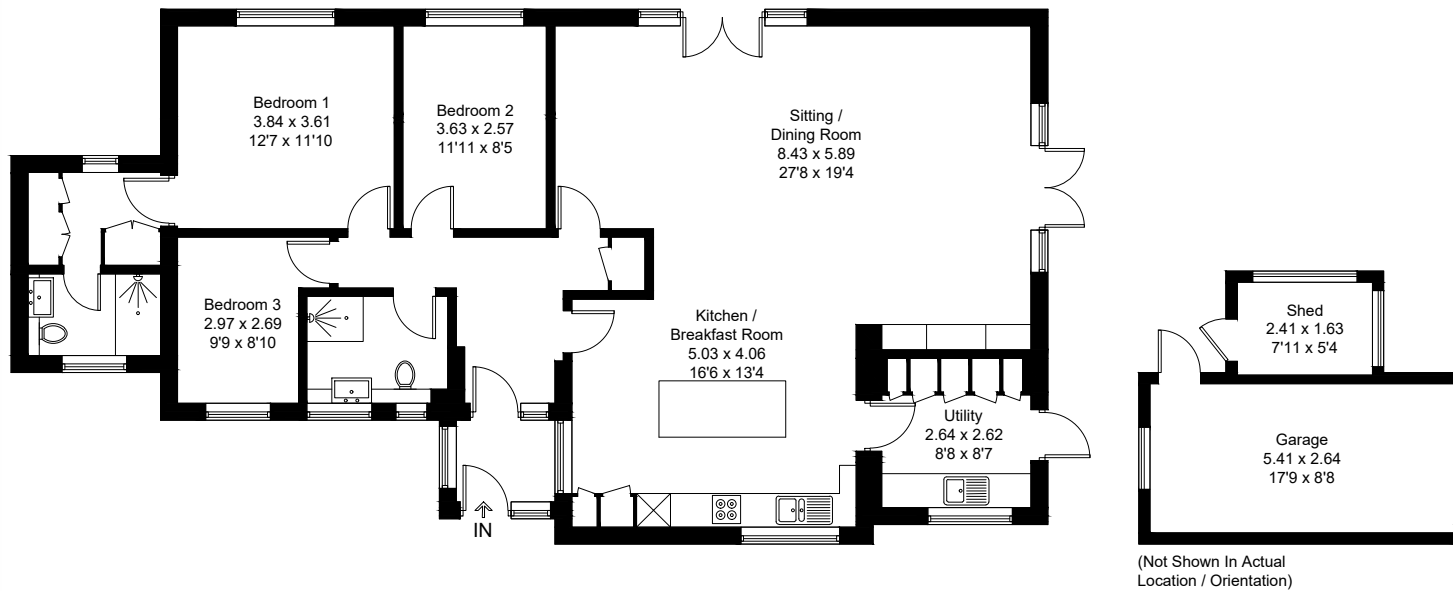


Approximate Gross Internal Area = 131.3 sq m / 1413 sq ft
Outbuilding = 18.3 sq m / 197 sq ft
Total = 149.6 sq m / 1610 sq ft



Created by **BAY TREE ESTATES - Telephone 01243 850451.**

These plans are for representation purposes only as defined by RICS - Code of Measuring Practice. Not to scale.(ID1242025)