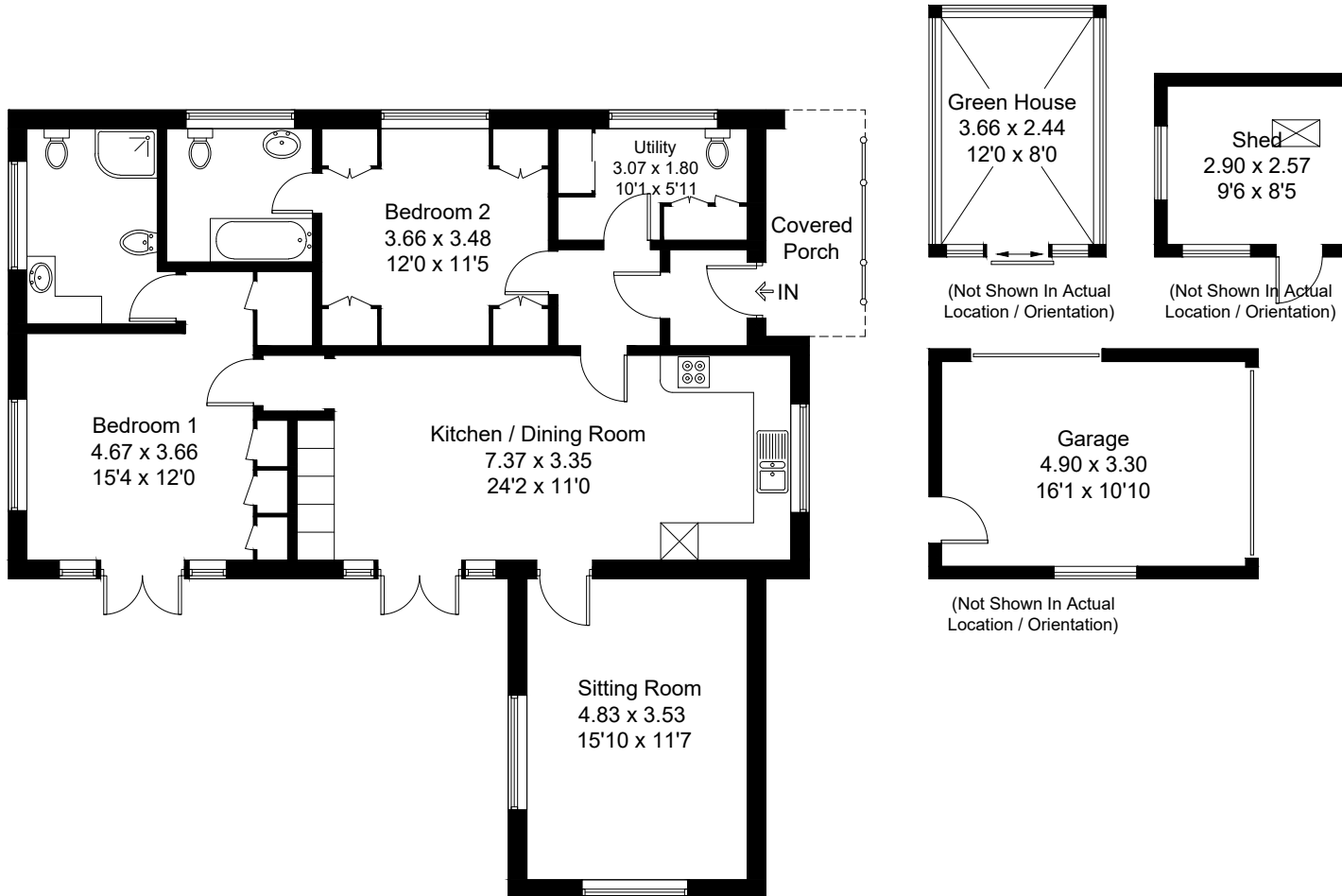
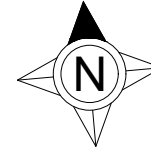


Approximate Gross Internal Area = 101.7 sq m / 1095 sq ft
Outbuildings = 32.5 sq m / 350 sq ft
Total = 134.2 sq m / 1445 sq ft
(Including Garage)



Created by **BAY TREE ESTATES - Telephone 01243 850451.**

These plans are for representation purposes only as defined by RICS - Code of Measuring Practice. Not to scale.(ID891047)