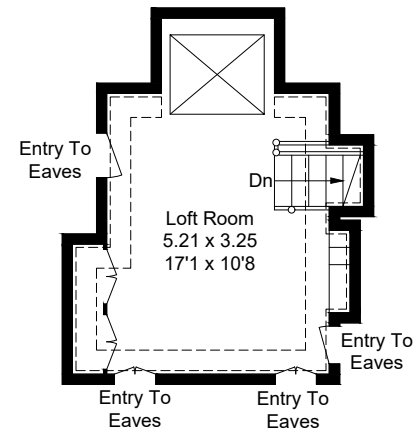
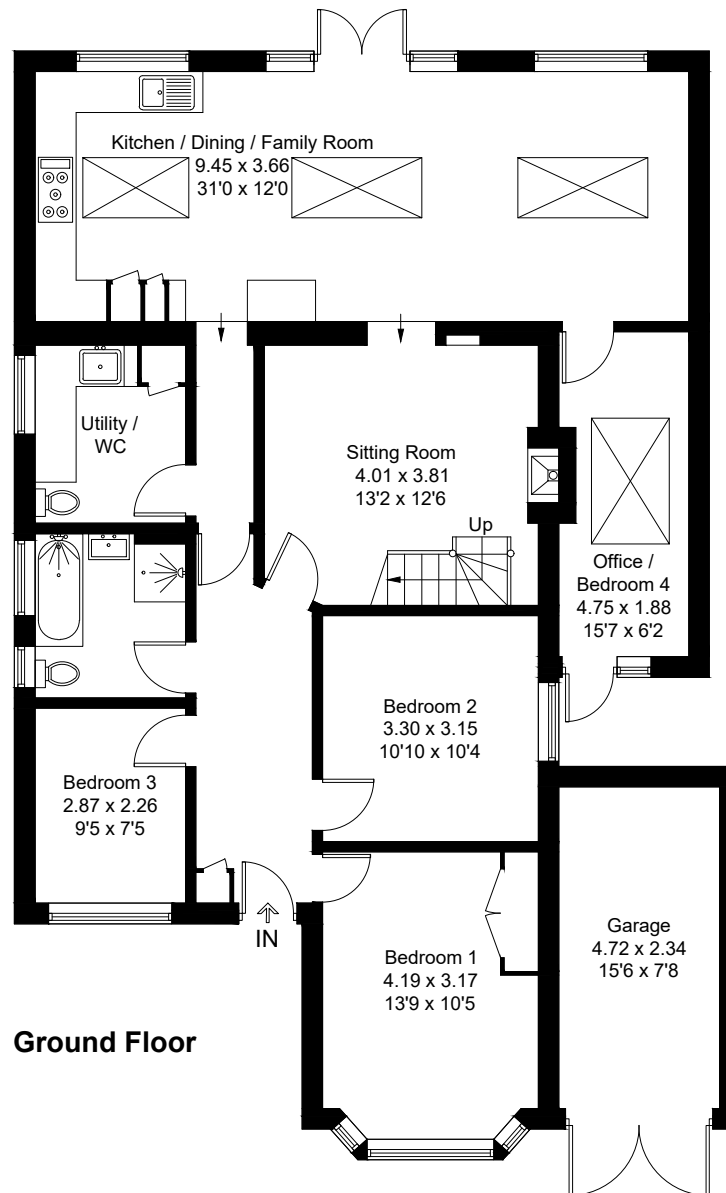
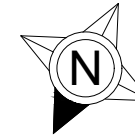


Approximate Gross Internal Area = 135.9 sq m / 1463 sq ft
Garage = 11.4 sq m / 123 sq ft
Total = 147.3 sq m / 1586 sq ft



Created by **BAY TREE ESTATES - Telephone 01243 850451.**

These plans are for representation purposes only as defined by RICS - Code of Measuring Practice. Not to scale.(ID1035339)