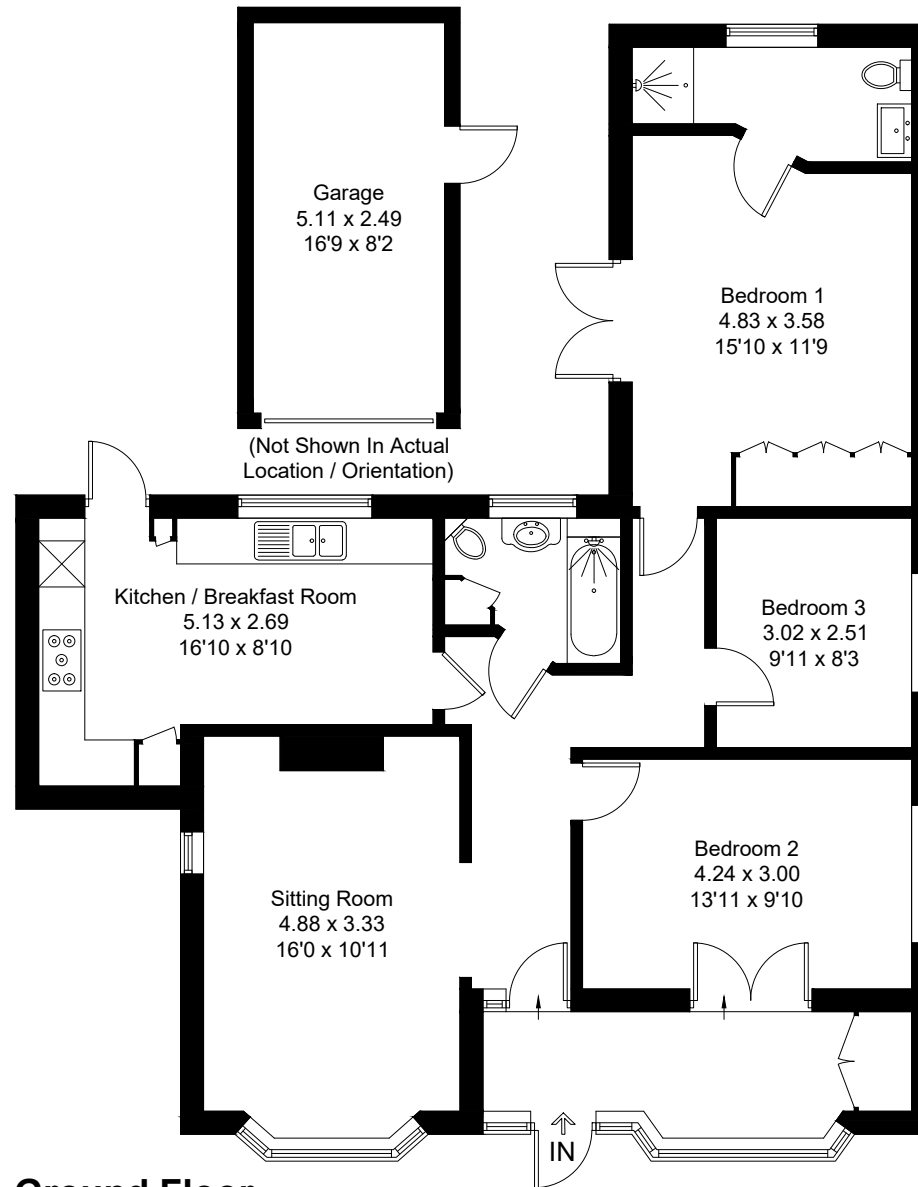


Approximate Gross Internal Area = 103.6 sq m / 1115 sq ft  
Garage = 12.7 sq m / 137 sq ft  
Total = 116.3 sq m / 1252 sq ft



### Ground Floor

Created by **BAY TREE ESTATES - Telephone 01243 850451.**

These plans are for representation purposes only as defined by RICS - Code of Measuring Practice. Not to scale.(ID1074119)