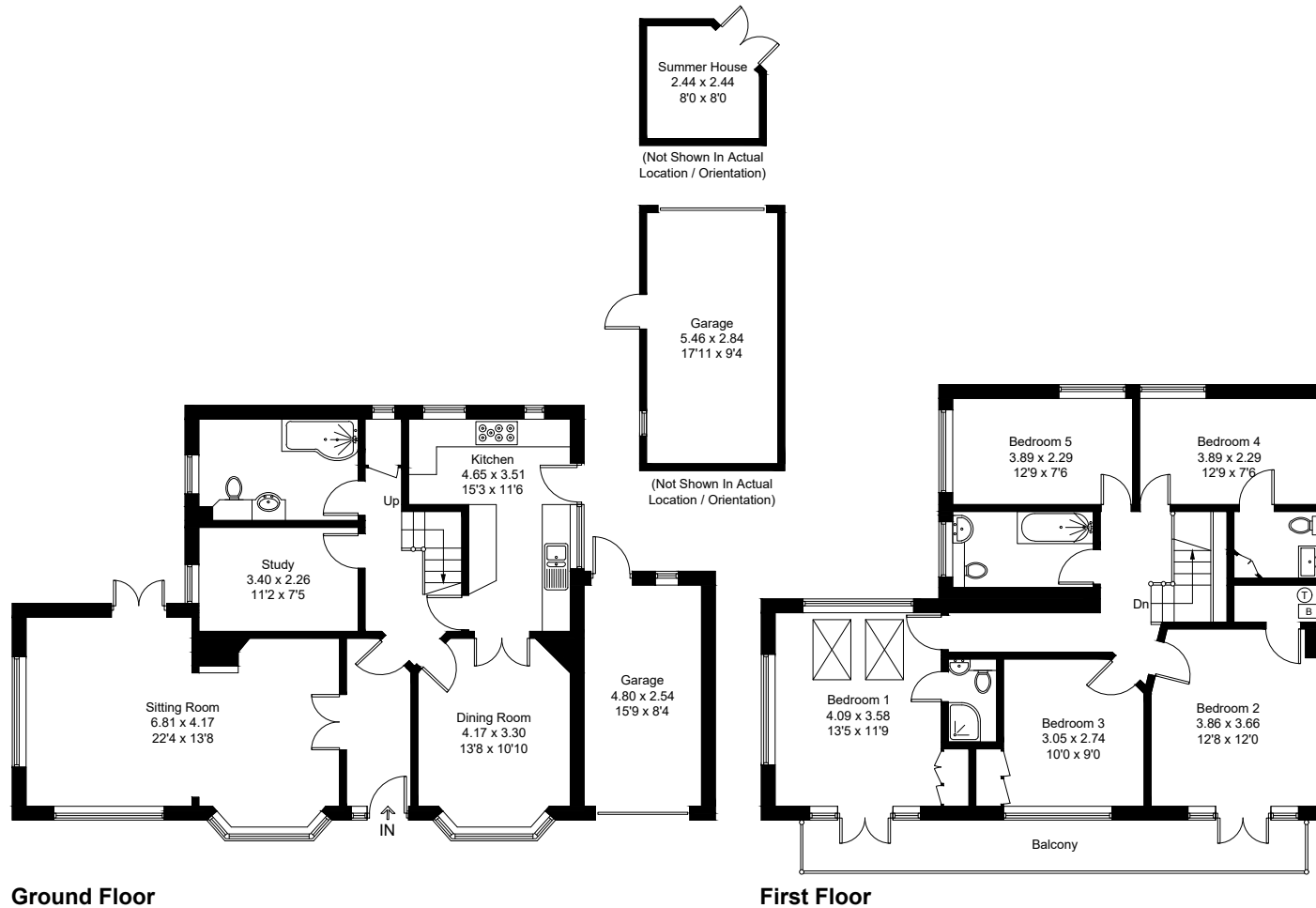
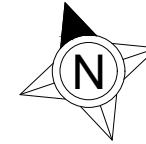


Approximate Gross Internal Area = 172.1 sq m / 1852 sq ft
 Garage / Summer House = 33.3 sq m / 358 sq ft
 Total = 205.4 sq m / 2210 sq ft



Created by **BAY TREE ESTATES - Telephone 01243 850451.**

These plans are for representation purposes only as defined by RICS - Code of Measuring Practice. Not to scale.(ID1081862)