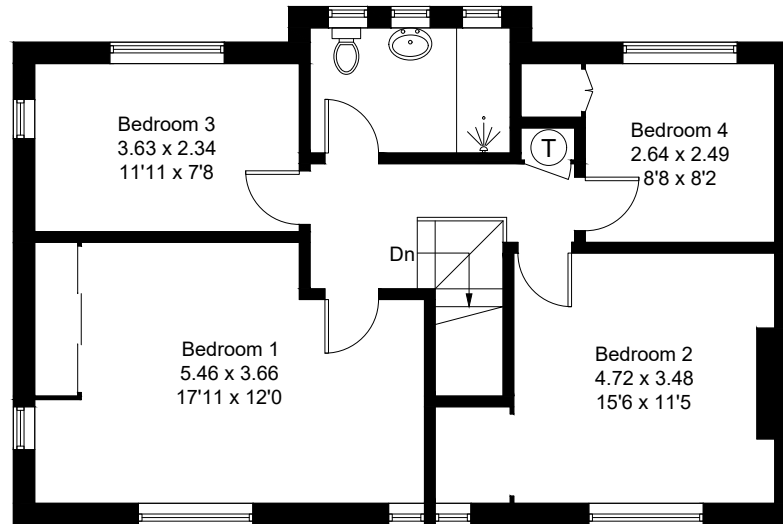
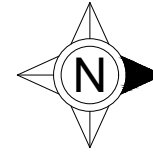
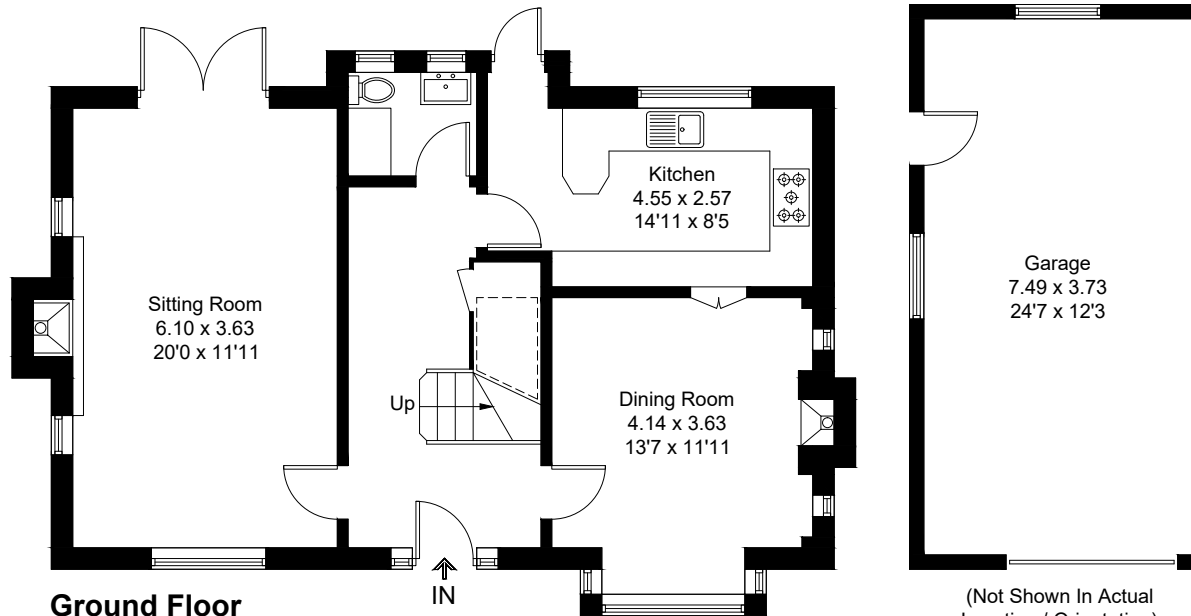


Approximate Gross Internal Area = 132.6 sq m / 1427 sq ft  
Garage = 28.1 sq m / 302 sq ft  
Total = 160.7 sq m / 1729 sq ft



= Reduced headroom  
below 1.5m / 5'0

**First Floor**



**Ground Floor**

(Not Shown In Actual  
Location / Orientation)

Created by **BAY TREE ESTATES - Telephone 01243 850451.**

These plans are for representation purposes only as defined by RICS - Code of Measuring Practice. Not to scale.(ID1176997)