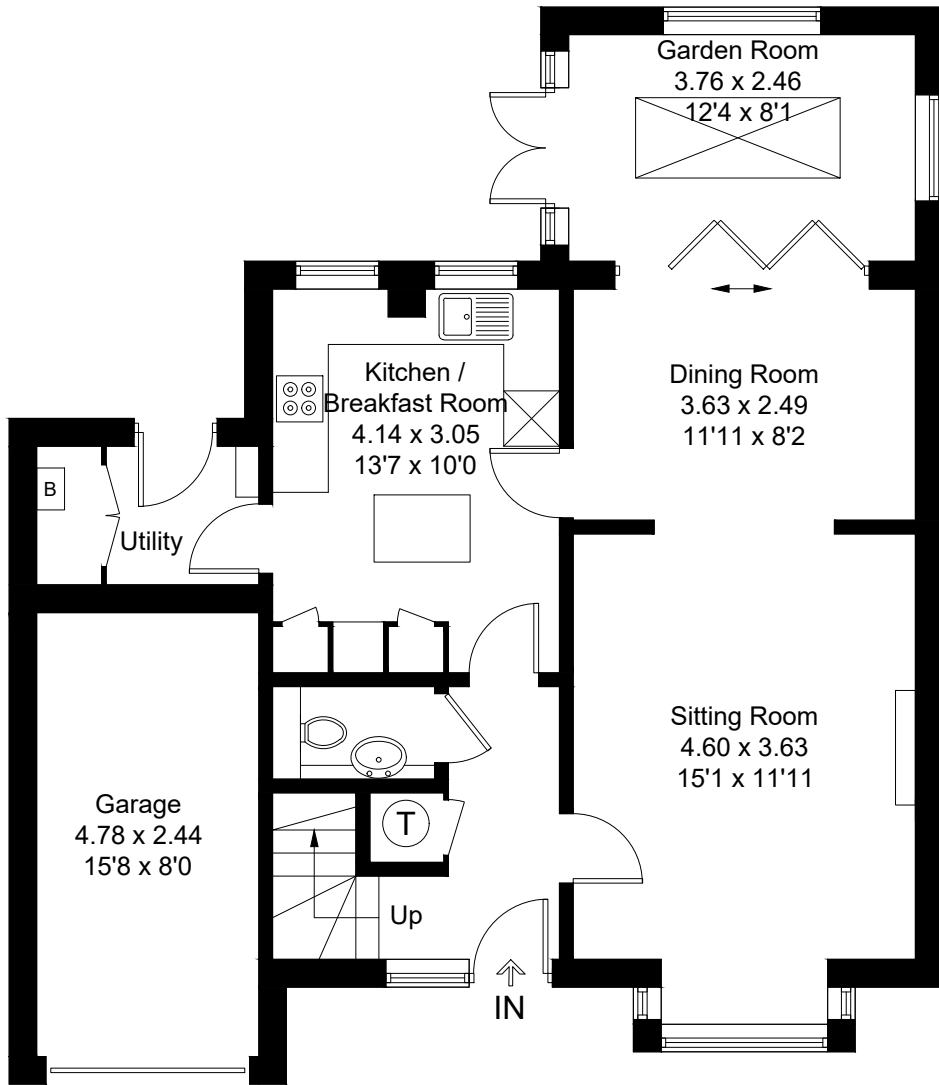
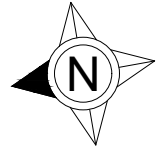
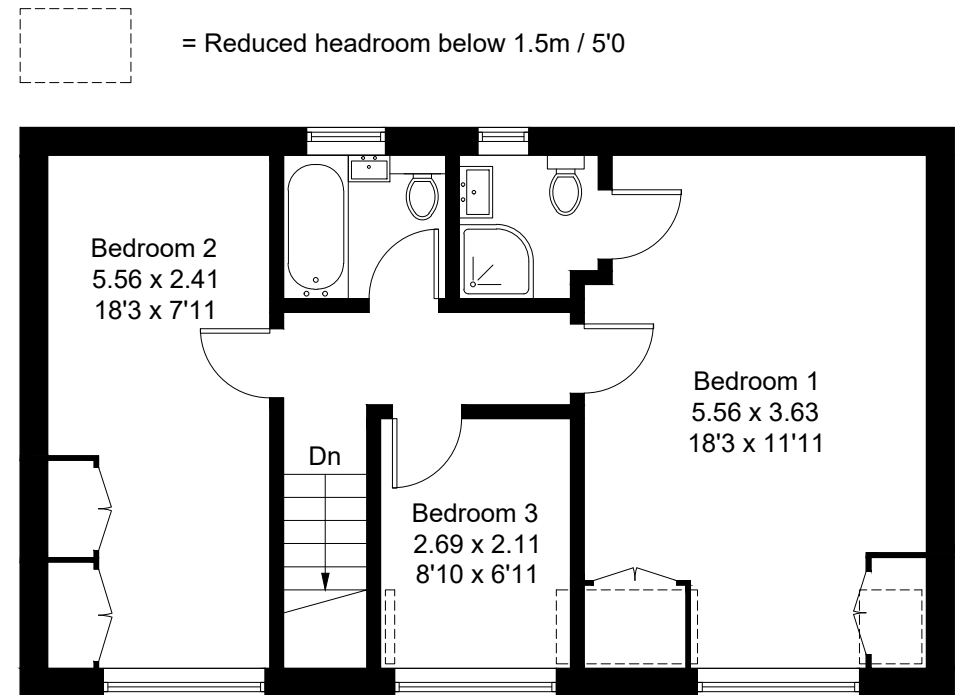


Approximate Gross Internal Area = 119.0 sq m / 1281 sq ft
 Garage = 11.5 sq m / 124 sq ft
 Total = 130.5 sq m / 1405 sq ft



Ground Floor



First Floor

Created by **BAY TREE ESTATES - Telephone 01243 850451.**

These plans are for representation purposes only as defined by RICS - Code of Measuring Practice. Not to scale.(ID1186955)