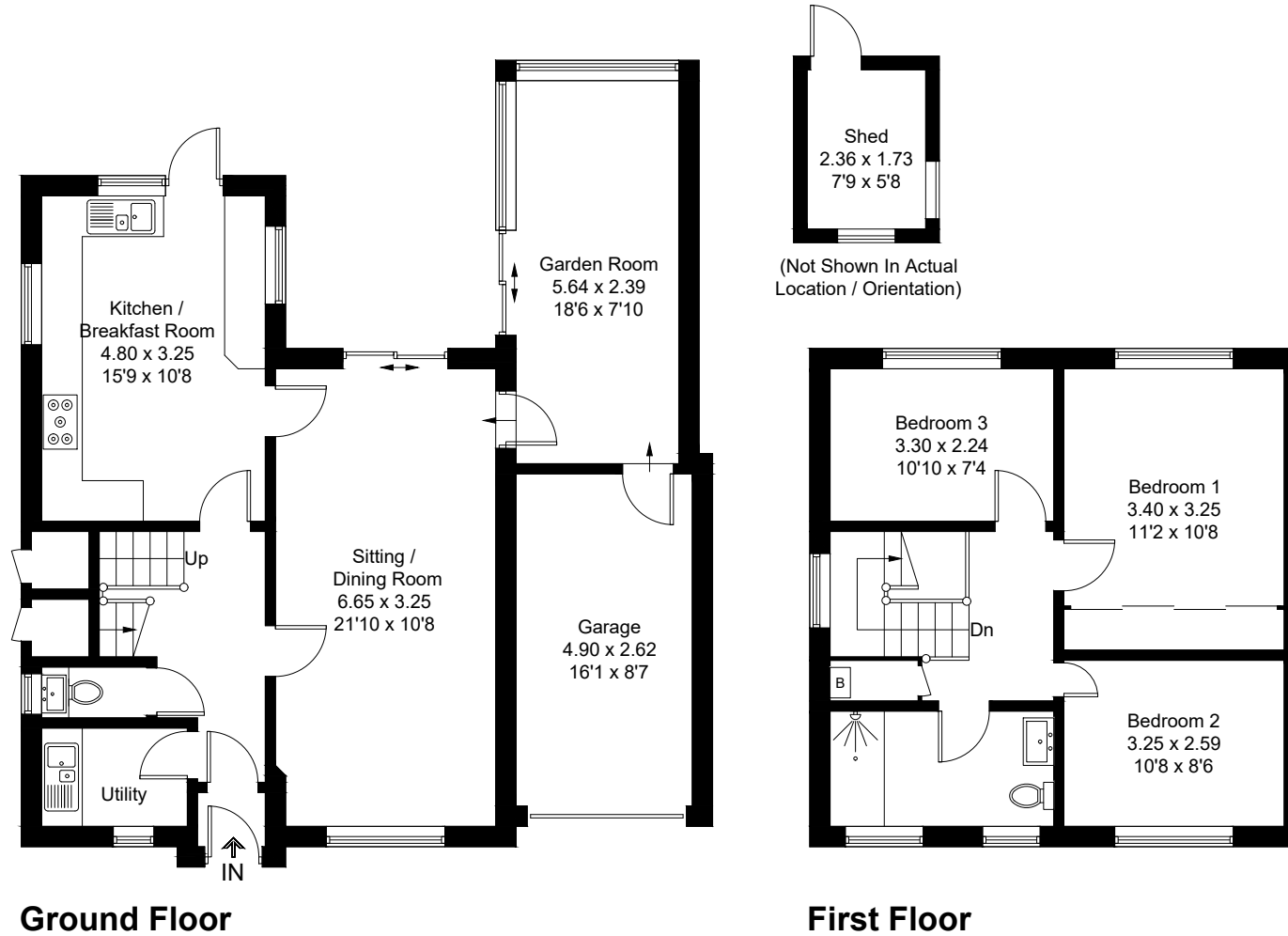


Approximate Gross Internal Area = 126.6 sq m / 1363 sq ft  
Shed / External Store = 5.7 sq m / 61 sq ft  
Total = 132.3 sq m / 1424 sq ft  
(Including Garage)



Created by **BAY TREE ESTATES - Telephone 01243 850451.**

These plans are for representation purposes only as defined by RICS - Code of Measuring Practice. Not to scale.(ID1219523)