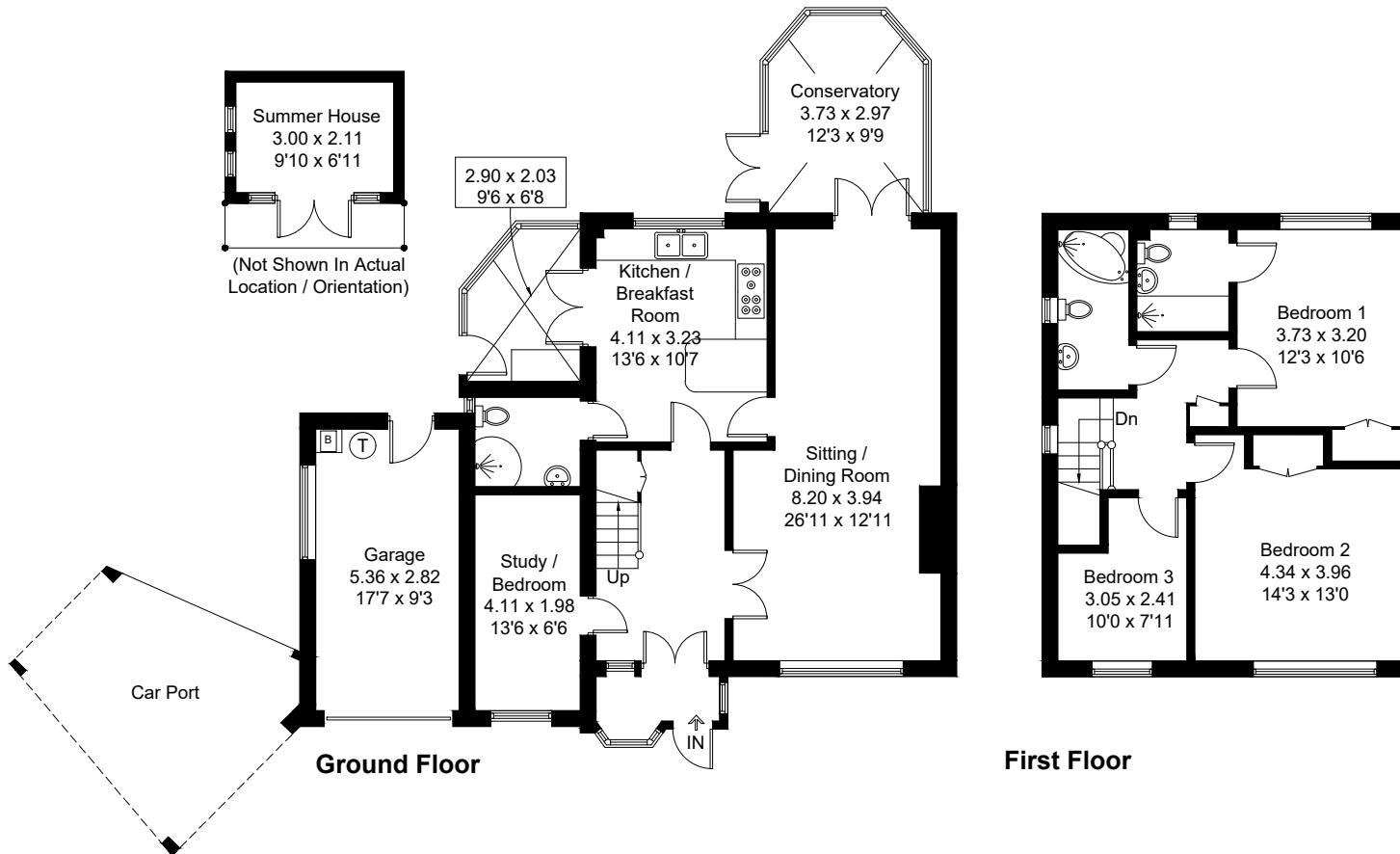


Approximate Gross Internal Area = 142.6 sq m / 1535 sq ft
Garage / Summer House = 21.0 sq m / 226 sq ft
Total = 163.6 sq m / 1761 sq ft



Created by **BAY TREE ESTATES - Telephone 01243 850451.**

These plans are for representation purposes only as defined by RICS - Code of Measuring Practice. Not to scale.(ID1280503)