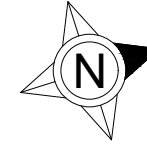
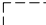
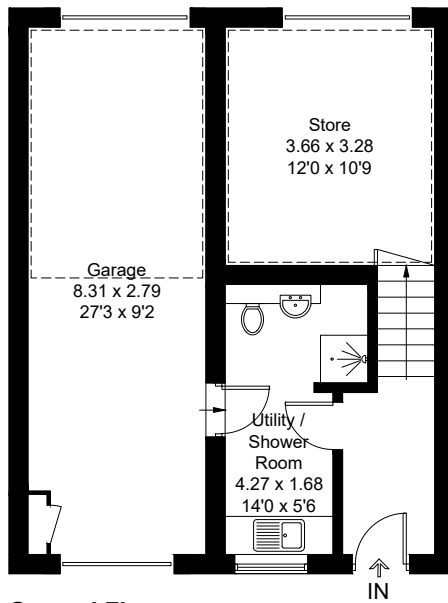


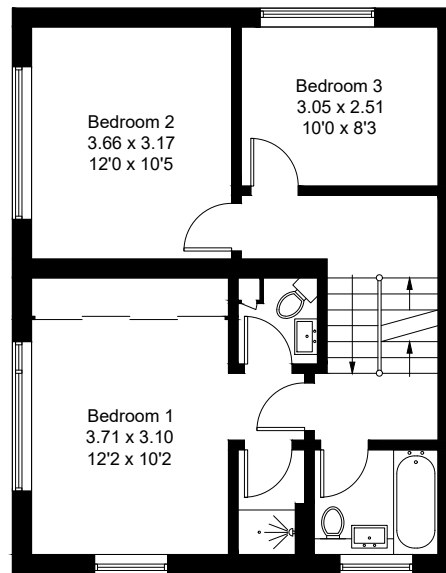
Approximate Gross Internal Area = 145.4 sq m / 1565 sq ft
(Including Garage)



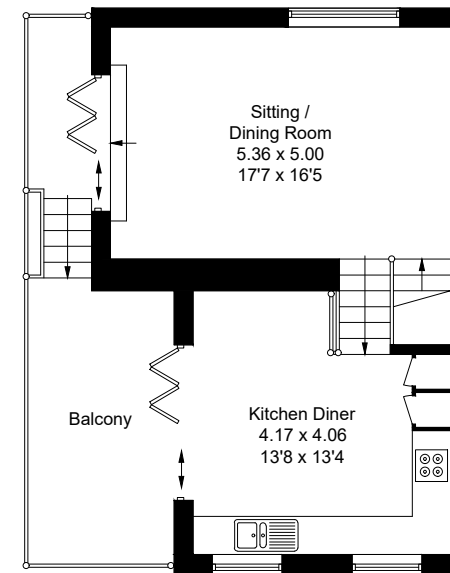
 = Reduced headroom below 1.5m / 5'0"



Ground Floor



First Floor



Second Floor

Created by **BAY TREE ESTATES - Telephone 01243 850451.**

These plans are for representation purposes only as defined by RICS - Code of Measuring Practice. Not to scale.(ID1290143)