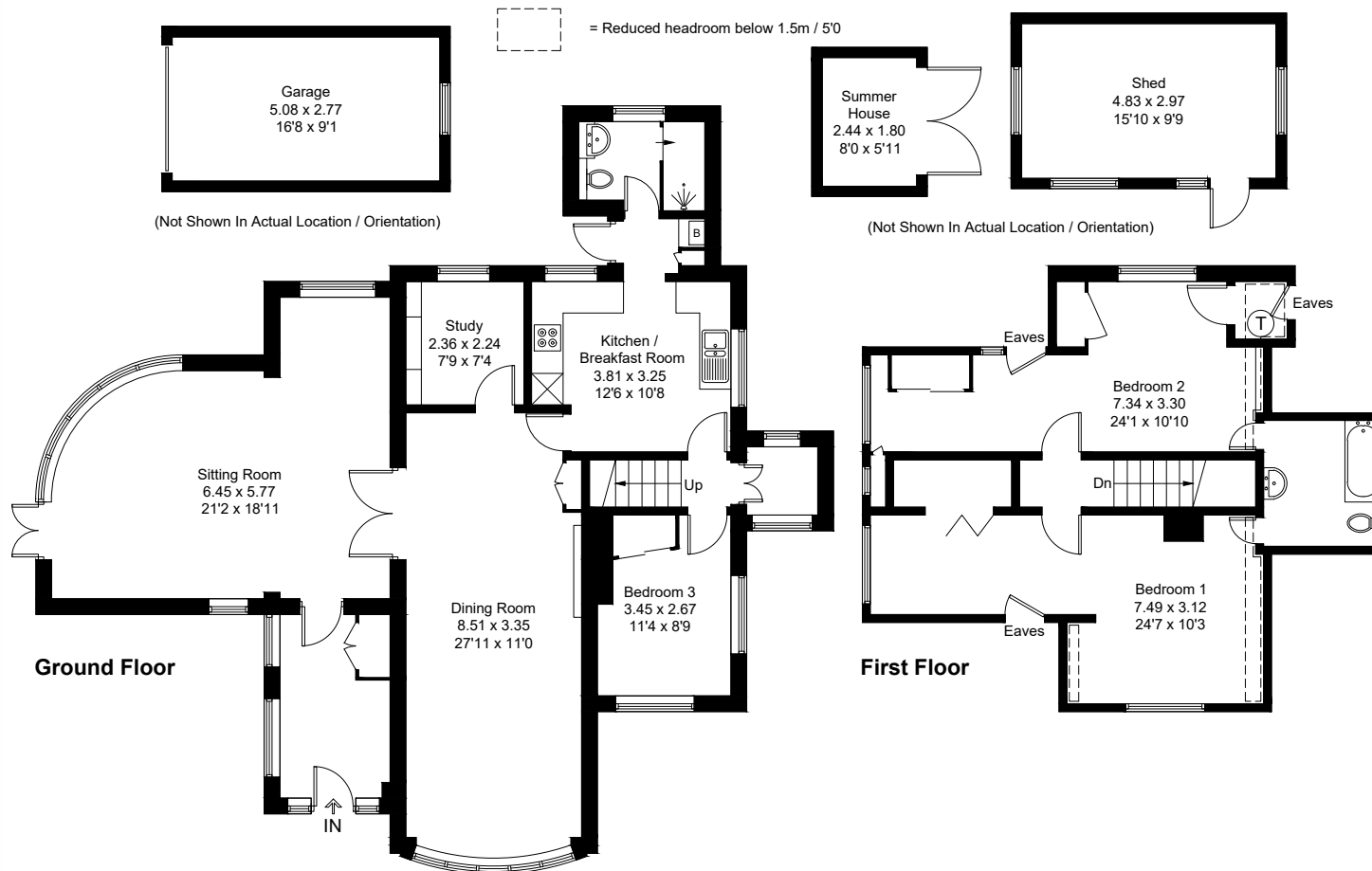
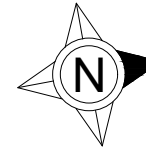


Approximate Gross Internal Area = 162.9 sq m / 1753 sq ft  
Garage = 14.0 sq m / 151 sq ft  
Outbuildings = 18.7 sq m / 201 sq ft  
Total = 195.6 sq m / 2105 sq ft



Created by **BAY TREE ESTATES - Telephone 01243 850451.**

These plans are for representation purposes only as defined by RICS - Code of Measuring Practice. Not to scale.(ID1297929)