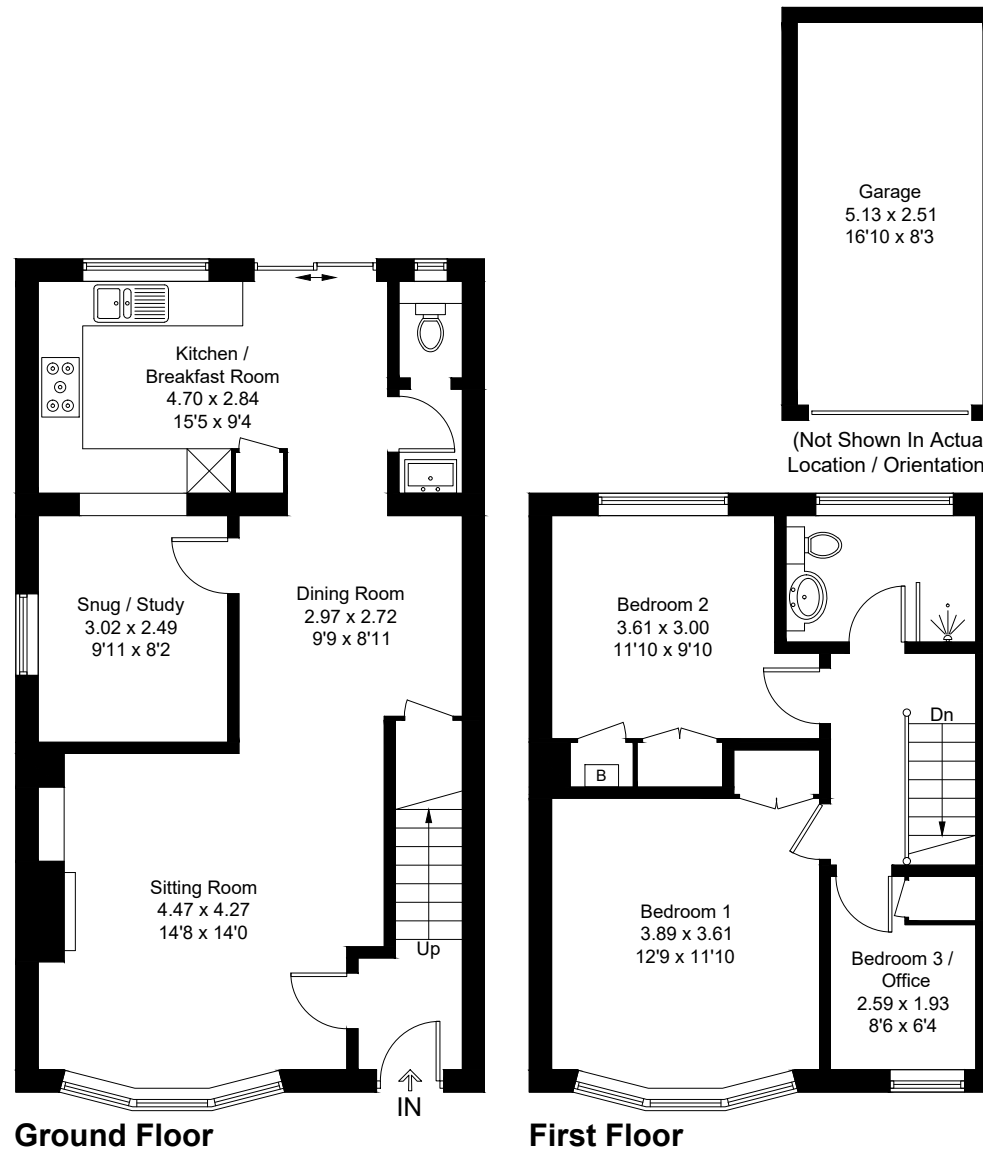


Approximate Gross Internal Area = 104.2 sq m / 1122 sq ft
Garage = 12.9 sq m / 139 sq ft
Total = 117.1 sq m / 1261 sq ft



Ground Floor

First Floor

Created by **BAY TREE ESTATES - Telephone 01243 850451.**

These plans are for representation purposes only as defined by RICS - Code of Measuring Practice. Not to scale.(ID1310843)