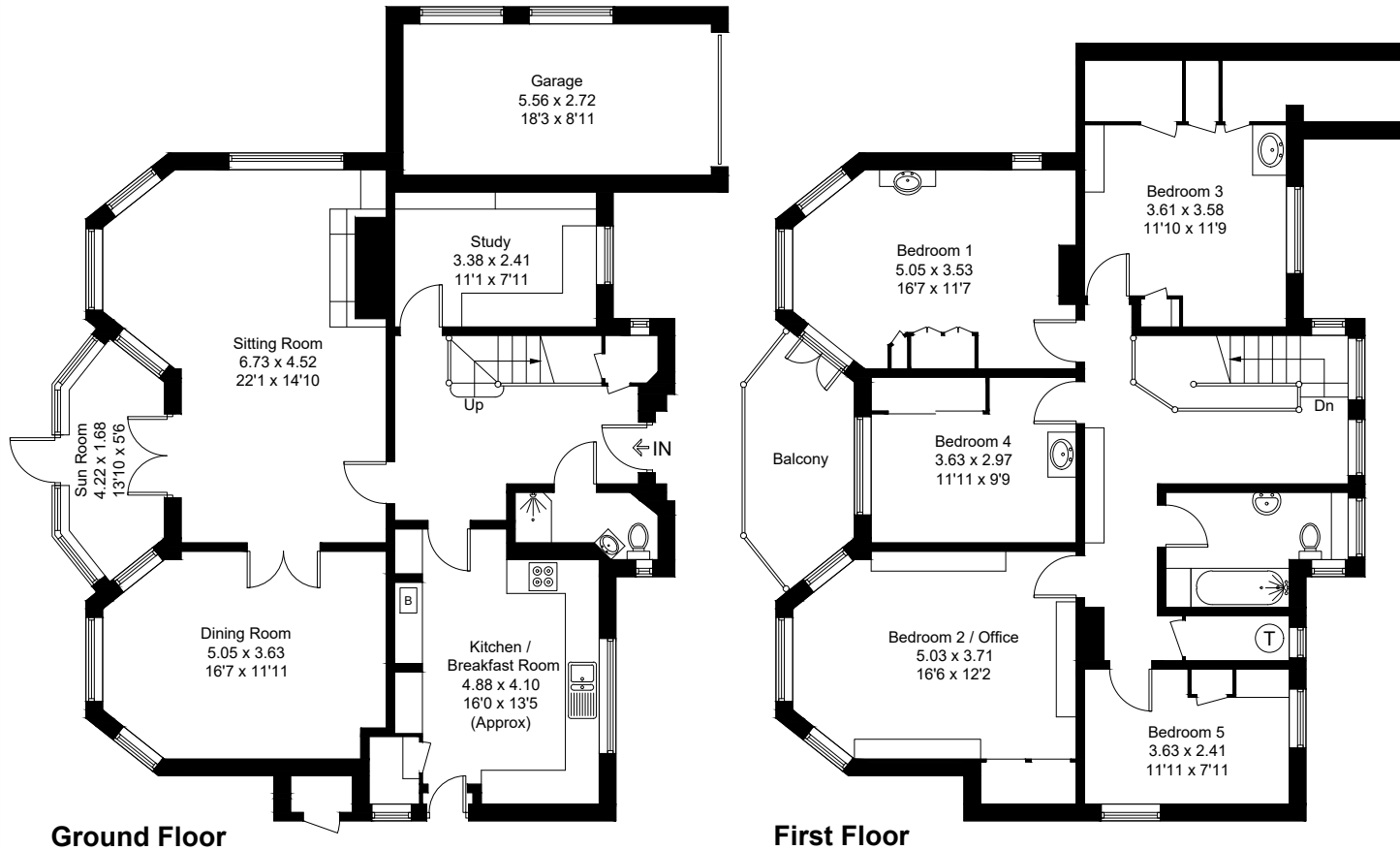
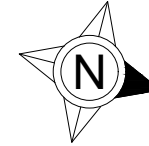


Approximate Gross Internal Area = 202.6 sq m / 2181 sq ft
Garage = 14.8 sq m / 159 sq ft
Total = 217.4 sq m / 2340 sq ft
(Excluding External Cupboard)



Created by **BAY TREE ESTATES - Telephone 01243 850451.**

These plans are for representation purposes only as defined by RICS - Code of Measuring Practice. Not to scale.(ID1317770)